

Blue Banana

Guide des tailles – PAP Homme Bas

SWIFT CHINO PANTS



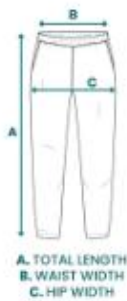
Measurements in cm	38	40	42	44	46
TOTAL LENGTH	104	105	106	107	108
WAIST WIDTH	40	42	44	46	48
HIP WIDTH	52	54	56	58	60

STRAIGHT CORDUROY PANTS



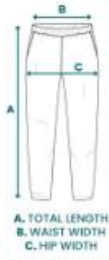
Measurements in cm	38	40	42	44	46
TOTAL LENGTH	105	105,5	106	108,5	109
WAIST WIDTH	40	42	44	46	48
HIP WIDTH	50	52	54	56	58

RAVEN CARGO PANTS



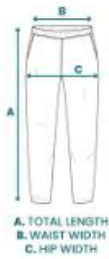
Measurements in cm	38	40	42	44	46
TOTAL LENGTH	105	105,5	106	108,5	109
WAIST WIDTH	40	42	44	46	48
HIP WIDTH	50	52	54	56	58

HIKER JOGGER PANTS



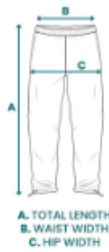
Measurements in cm	38	40	42	44	46
TOTAL LENGTH	105	105,5	106	108,5	109
WAIST WIDTH	40	42	44	46	48
HIP WIDTH	50	52	54	56	58

PULSE PANTS



Measurements in cm	38	40	42	44	46
TOTAL LENGTH	106	108	110	112	114
WAIST WIDTH	42	45	48	51	54
HIP WIDTH	55	58	61	64	67

TECH PANTS



Medidas en cm	XS	S	M	L	XL
LARGO TOTAL	96	98	100	102	105
ANCHO DE CINTURA	32	35	38	41	44
ANCHO DE CADERA	49	52	55	58	61

TRAINING PANTS



Measurements in cm	XS	S	M	L	XL
TOTAL LENGTH	94	96	98	100	102
WAIST WIDTH	34	36	38	40	42
HIP WIDTH	48	50	52	54	56

ACTIVE SHORTS



Measurements in cm	XS	S	M	L	XL
TOTAL LENGTH	42	43	44	45	46
WAIST WIDTH	38	40	42	44	46
HIP WIDTH	52	54	56	58	60

TRAIL SHORTS



Measurements in cm	XS	S	M	L	XL
TOTAL LENGTH	35	36	37	38	39
WAIST WIDTH	30	34	38	42	47
HIP WIDTH	47,5	51,5	55,5	59,5	64,5